

Assembly Instructions for Ballast Mast

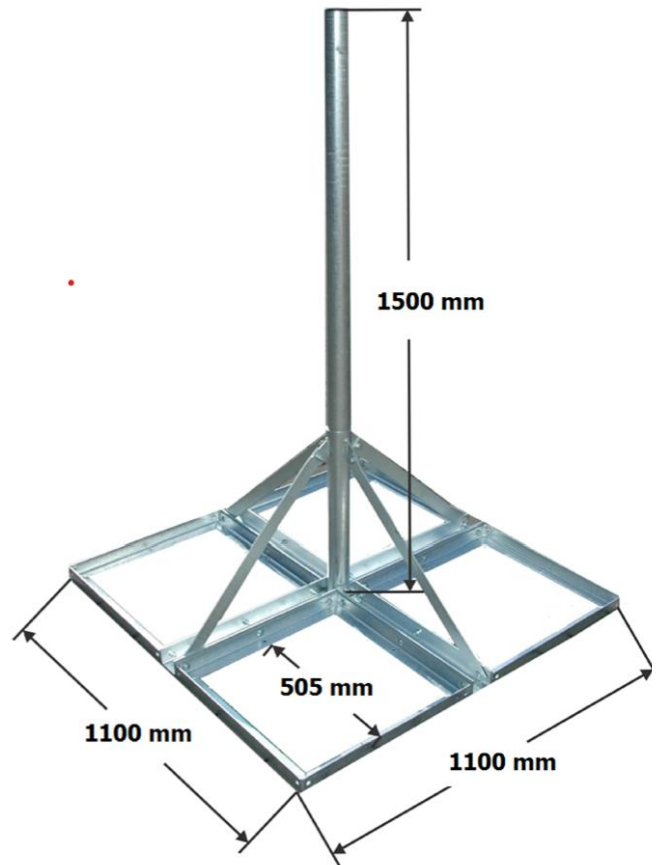
Item No. 04.202



Item No. 04.202

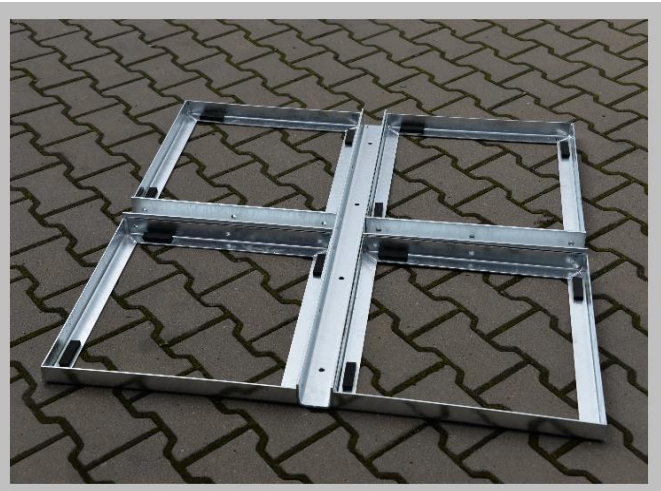
Mounting components:

- C-channel 70x50x5 mm L= 1100 mm - 1 piece
- C-channel 70x50x5 mm L= 550 mm - 2 pieces
- Angle frame 40x40x4 mm - 4 pieces
- Pipe antenna mast 60,3 x 2,5 mm L= 1500 mm - 1 piece
- Reinforcement flat bar 40x4 mm L= 650 mm - 4 pieces
- Sleeve for structural reinforcement - 1 piece
- Reducing sleeve for mast diameter 48 mm - 1 piece
- Screw M10x90 - 1 piece
- Nut M10 - 5 pieces
- Screw M10x25 - 7 pieces
- Washer size 10 - 4 pieces
- Screw M8x25 - 24 pieces
- Nut M8 - 24 pieces
- Washer size 8 - 20 pieces
- Expanded washer size 8 - 4 pieces

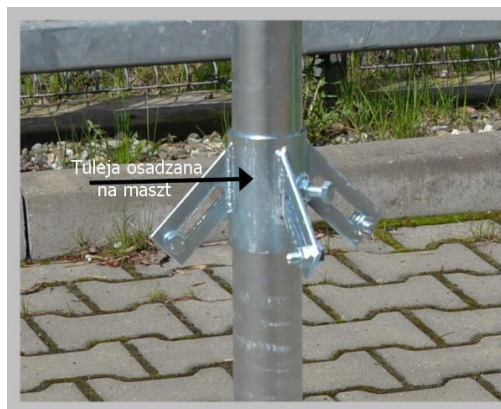


1. Method of assembly:

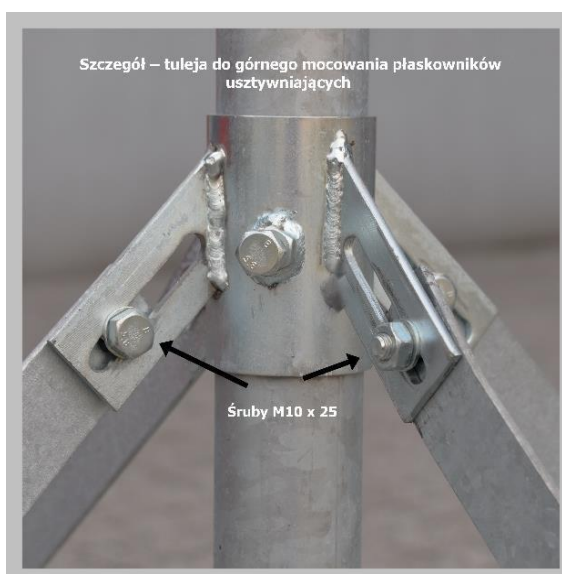
Using, if necessary, a felt or rubber washer, we position the C-channel elements. We attach the frames to them. This creates the base of the mast.

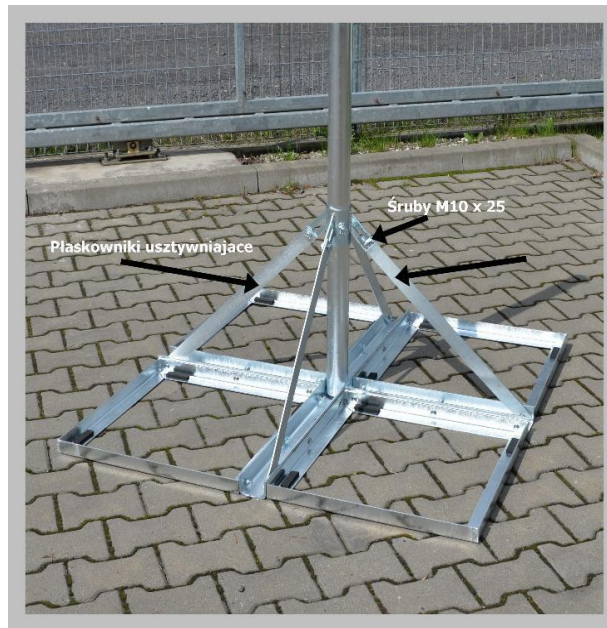


2. Onto the antenna mast made of a 60.3 x 2 mm pipe, we slide the sleeve for structural reinforcement using flat bars. We attach the mast to the C-channel element (70x50x5 mm, length 1100 mm) at its middle part using an M10x90 screw.



3. We fasten the flat bars to reinforce the structure.





4. In the upper part of the mast, we insert the reducing sleeve, which allows for extending the mast. An additional mast made of a 48 mm diameter pipe is used for this purpose

Attention! The extension mast is not included in the set!



5. After assembling the entire structure and setting the correct mast tilt angle, we finally tighten all the screws.
6. We load the mast with sidewalk slabs measuring 50x50x7 cm, each weighing 35 kg. The ballast size depends on the elements mounted on the mast. For a 120 cm satellite antenna, the ballast size is $8 \times 35 \text{ kg} = 280 \text{ kg}$.

Technical data:

- Base area of the mast: 110 x 110 cm
- Mast made of a 60.3 x 2.5 mm pipe, height 1.5 m
- Possibility to extend with masts of 48 mm diameter and max height 2.5 meters
- Number of sidewalk slabs: 4 - 8 pcs
- Weight of one slab: 35 kg
- Maximum load per 1 m² surface: 235 kg
- Mast adjustment in one direction: +/- 5°
- Weight of the complete mast structure (without ballast): 44 kg
- Anti-corrosion protection: hot-dip galvanizing, durability > 20 years
- EAN code: 5907813651236
- Patent office registration number: W.125034