

# Electrical Components Manufacturer Since 1988



Switch on Safety, Switch to ONCCY

## Electrical Components Expert

Started as a switch manufacturer in 1988, ONCCY have grown up to be a company that provide one-stop power solutions, offering a comprehensive range of high-quality electrical components for Solar PV systems, energy storage, electric vehicle chargers.


With over 40 years of experience in production, ONCCY operates a state-of-the-art, 30,000-square-meter manufacturing facility. Our more than 50 engineering & quality personnel carefully produce products that meet international standards, including IEC/EN60947-3, AS60947.3, UL5081, GB/T14048.3 and have obtained TUV, CE, CB, SAA, UL certification.

 30+ Years of Experience

 100+ PCT Patents

 100+ Countries Distribution

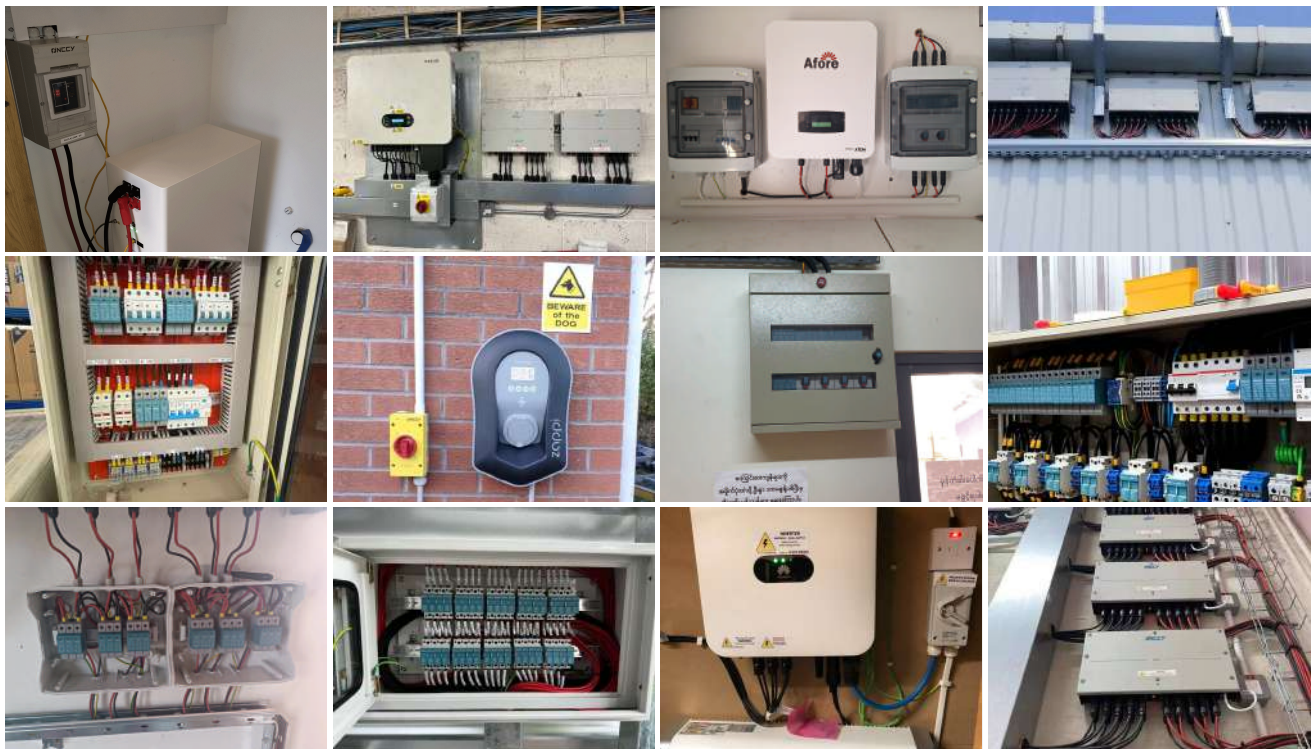
 90% Automation Production

 20,000+ Projects

 20% of Annual sales to R&D

Our main products are including load break switch, circuit breaker (MCB), isolation switch, molded case circuit breaker (MCCB), fuse holder, surge protector (SPD) and Combine Boxes, and are popular selling in Europe, asia-pacific, south America and south Africa with a comprehensive quality assurance and after-sales system.

## Project Cases



# DC ELECTRICAL COMPONENTS

## DC Isolation Switch EDS1



Ui:1500VDC Ue:600~1200VDC Ie:9~32A

- The maximum on-off switching time is less than 3ms
- The external box installation meets the IP66 protection class

## DC Isolation Switch EDS5/6/7



Ui:1600VDC Ue:600~1600VDC Ie:3~63A

- Remotely switch off the device under voltage application
- A variety of installation methods to meet different needs
- Modular design, available 2-10 pole
- Positive contact, reverse contact or horizontal contact are available

## DC Surge Protection Device EDP



Ue:24~1500VDC I<sub>max</sub>:20~40kA

- Category: T2, T1+T2
- Housing: Pluggable design
- Communication terminals are optional

## DC MCB & DC Isolator EDB1



Ui:1200VDC Ue:100~1200VDC Ie:10~250A

- Overload and the short circuit protection function
- Rated short circuit breaking capacity up to 10 kA
- Non-polarity and Polarity both available

# DC ELECTRICAL COMPONENTS

## DC MCCB EDM3



Ui:1000VDC Ue:500VDC Ie:125~250A

- High breaking capacity, reliable insulation
- Overload protection and short-circuit protection
- A IP66 and UV resistance PC enclosure is optional

## DC MCCB EM3DP



Ui:1600VDC Ue:250~1500VDC Ie:63~800A

- High breaking capacity, reliable insulation
- Overload protection and short-circuit protection
- Smaller product volume, Anti arc cover optional

## DC Fuse Holder EDFH



Ui:1000~1500VDC Ue:1000~1500VDC Ie:2~50A

- Ambient Temperature: -40°C~+90°C
- Flexible installation, easy to replace
- Fire-retardant shell, high temperature resistance

## DC Disconnecter EHD



Ui:1500VDC Ue:1000~1500VDC Ie:160~800A

- Easy to install
- Safe reliable operation
- Designed for harsh environments
- AUX. contact easy-mounting

# DC ELECTRICAL COMPONENTS

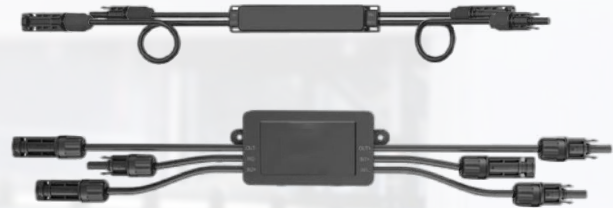
## Firefighter Safety Switch ERS



Ui:1500VDC Ue:600~1500VDC Ie:9~55A

- PC+ABS material,IP66 protection grade
- Multi clock interface type optional (knockout hole / gland / MC4 terminal)
- The isolation switches are TUV, CE, CB, SAA certificated

## Rapid Shutdown Switch ERP



Ue: 60~140VDC Ie:20A

- Slim size match module perfectly
- Flame retardant rating: UL94-V0
- Protection Level: IP68

## Electric Box ECB/ EAB



Ue:600~1500VDC IP65

- Wiring and Modular capacity from 4 to 36 modules
- Material:ABS or PC ABS or Metal Consumer Unit
- Degree of protection:IP65
- Suitable for PV system, equipped with SPDs and isolator swithes and so on

## Solar DC Connector EPV



Ue:1500VDC Ie:40~50A

- Ambient temperature range:-40°C~+85°C
- Degree of protection:IP68
- Insulation material:PC/PPO
- Flame class:UL94-V0

# AC ELECTRICAL COMPONENTS

## AC Isolation Switch EAS50



Ui:500VAC Ue:250VAC, 440VAC Ie:20~63A

- 4pcs screws with protective caps for high strength locking
- IP66&UV resistance and flame-retardant material
- Dual 25mm threaded conduit entries on top and bottom

## AC Isolation Switch EAS80



Ui:800VAC Ue:415VAC, 690VAC Ie:16~125A

- High-quality waterproof and easy to install
- The interior is made of high-conductivity nickel-phosphorus copper
- The shell is made of high-strength flame-retardant PC material

## AC Isolation Switch EAS69



Ui:690VAC Ue:415VAC Ie:20~80A

- With alloy contacts electrical special silver long life and high reliability
- Small size, space-saving installation
- Construct a protective finger to make the operation safe

## Metal Clad Switched Disconnecter EAS80



Ui:800VAC Ue:690VAC Ie:32~125A

- AC-23A allows safe operation with even highly inductive loads
- Supplied complete with Fuses optional
- Ingress Protection Rating-IP65

# AC ELECTRICAL COMPONENTS

## AC Disconnecter EHA



Ui:1000VAC Ue:500~1000VAC Ie:160~800A

- Wiring: Switch is non-polarized
- Auxiliary contacts easily mounted
- Reliable position indicator through visible windows

## AC Surge Protection Device EAP



Ue:72~440VAC I<sub>max</sub>:10~100KA

- Prewired modular complete unit
- Plug-in protection module, easily installation and maintenance.
- High energy varistor, response time less than 25 nanosecond

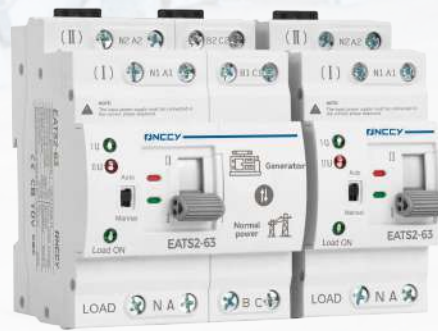
## AC Fuse Holder EAFH



Ue:230/500VAC Ie:10~32A

- Design according to IEC/EN60947-3
- Can be sealed with leads
- Flexible installation, easy to replace

## Automatic Transfer Switch EATS



Ui:690VAC Ue:220VAC Ie:6A~ 63A

- Compact structure, reliable conversion
- Easy installation and maintenance, long life
- Electrically operated and manually operated are optional

# AC ELECTRICAL COMPONENTS

## AC MCB & AC Isolator **ESM&EAH1**



Ui:500VAC Ue:240/415VAC Ie:1~125A

- Overload and the short circuit protection function
- Rated short circuit breaking capacity up to 10KA
- Clear indication of the ON/OFF switch status

## AC RCBO **ESRO**



Ui:500VAC Ue:240/415VAC Ie:1~63A

- Multiple breaking capacities for residential and industrial applications
- Supports multiple types of residual current protection: AC,A,B
- Suitable for single-phase or three-phase power grids

## AC RCCB **ESL**



Ui:500VAC Ue:240/415VAC Ie:25~100A

- Two step snapping mechanism for easy efficient mounition in 35mm DIN Rail steadily
- Testing product's performance regularly

## Arc Fault Detection Device **EAFD**



Ui:400VAC Ue:230VAC Ie:6~63A

- LED normal operation indication/fault indication function
- Rated current overload protection function and short-circuit protection function
- Arc fault protection function, overvoltage protection and Leakage protection intelligent remote control



# AC ELECTRICAL COMPONENTS

## Energy Meter EM



Ue: 120~400VAC Ie:45~ 100A

- Single-phase energy analyzer with backlit LCD display with integrated touch keypad
- Particularly indicated for active energy metering cost allocation in applications up to 100A
- Housing for DIN-rail mounting, with IP51 front degree protection

## Overvoltage And Undervoltage Protector OCP



Ui: 400/700VAC Ue:220/380VAC Ie:63A/80A

- 75 degree high temperature resistance and V0 flame retardant rating
- Provide undervoltage and overvoltage protection, with automatic recovery capability
- Network connection optional, supporting Tuya intelligent remote control

## Modular Contactor EMC



Ue:AC12V/DC12V~AC380V/DC230V Ie:16~125A

- High degree of Electrical life
- Noiseless and hum free
- Compact design and auxiliary function

## Impulse Relays EIR

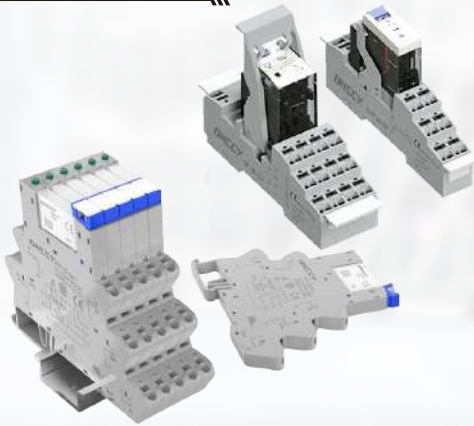


Ue: AC24V/DC12V~ AC230V/DC110V Ie:16A

- Continue operation 10000 times action reliable
- Reduce the Pull-in noise
- Automatic winding process to ensure reliable opening and closing of the coil

# INDUSTRIAL AUTOMATION

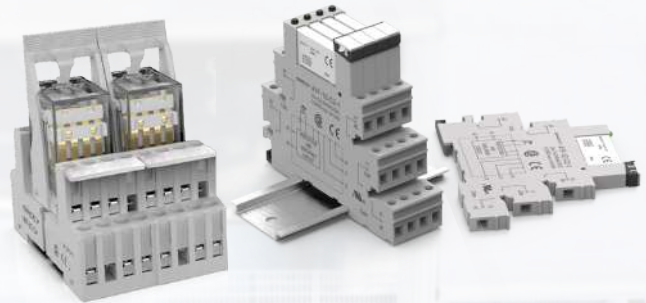
## Relay and Push-in Socket



Ue:6~110VDC/6~240VAC Ie:5~12A

- Push-in wiring with integrated push button
- A single terminal is equipped with two Push-in sockets
- Connect via bridge
- With printable labels

## Relay and Screw Mounting Socket



Ue:6~110VDC/6~240VAC Ie:5~12A

- The screw mounting, and the installation is firm and convenient
- The shell is made of PC material, strong and wear resistant, safe and reliable
- Small volume, Easy installation

## Plastic Buttons



Ui:600VAC/DC Ue:24~380VAC/VDC Ie:0.55A~10A

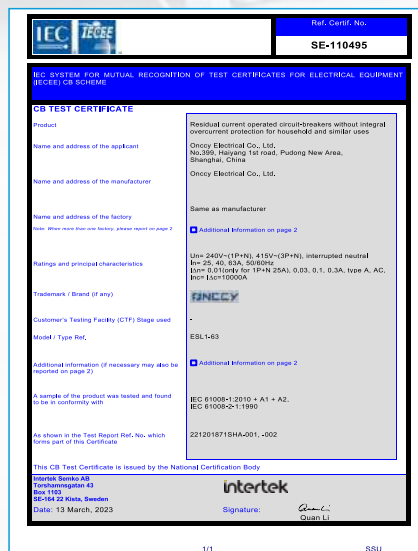
- IP65 Degree of protection
- Complete certifications: TUV, CE, UL
- Small size and light weight
- Modular contact blocks make installation and removal easier

## Emergency Stop Switch

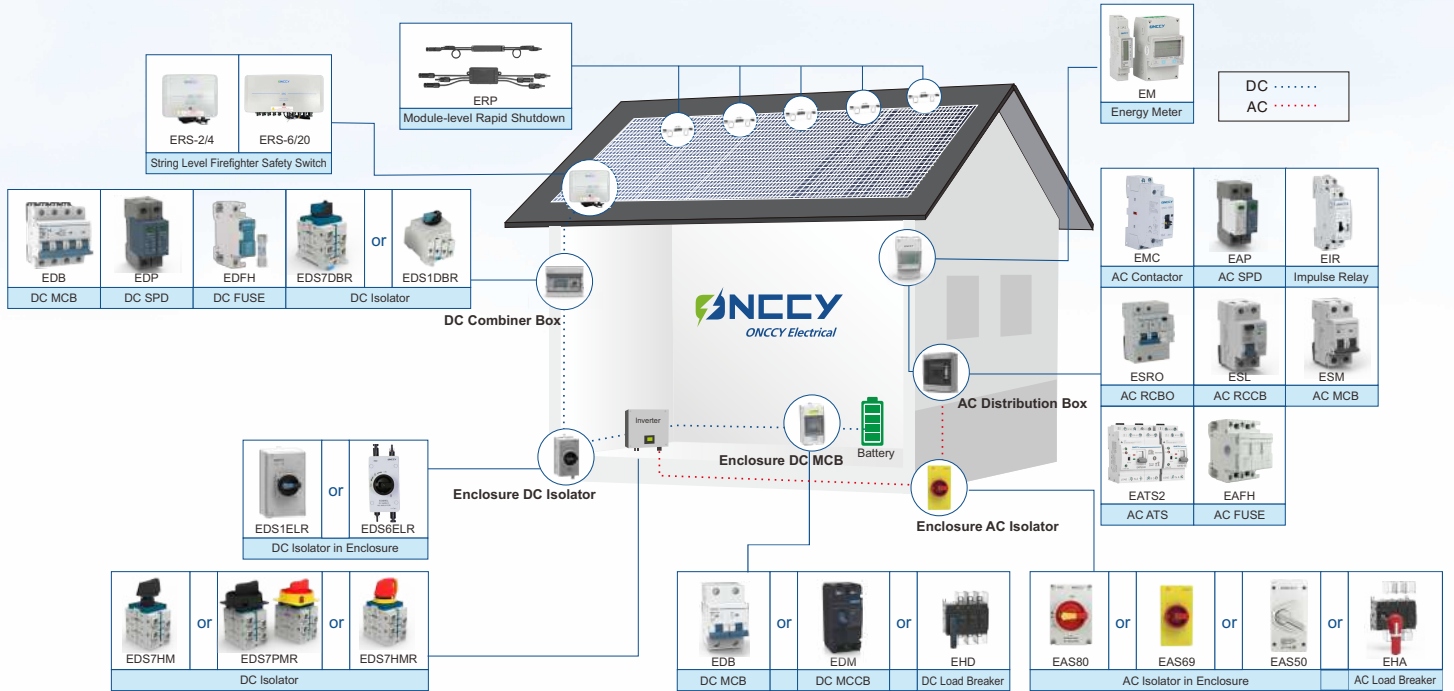


Ui:250VAC/DC Ue :250VAC/30VDC Ie:3A~5A

- Excellent safety and appearance design
- Gold-plated silver contact, long life 40000h
- Anti-flaming, Protection level IP65/Ik10
- Complete specifications, multiple styles to choose from



# One Stop Solution For PV System Electrical Components



**ONCCY ELECTRICAL CO., LTD**

+86-21-60250600

+86-17301617015

contact@onccy.com

No. 399, Haiyang 1st Road, Pudong New Area, Shanghai, China



Scan it to ONCCY

version 2025.06